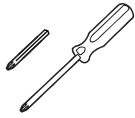


AHR Handrail

Installation Instructions

Tools Needed



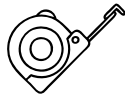
#2 Phillips Head
Screwdriver or Bit



Electric Drill



1/8" Metal
Drill Bit



Tape Measure

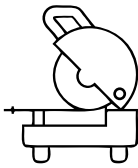


Bar Clamps x2

For Custom Lengths



Blue Tape



Chop Saw or
Hack Saw

! Always check local building codes, property lines and underground utilities before installation.

These instructions must be followed exactly as written and the materials used must be exactly as shown in the instructions. Any deviation from the instructions or variations in the materials installed may result in an unsuccessful installation.

! Additional tools and hardware may be needed when attaching your railing to concrete or brick.

NOTE: If connecting one or more rails together see instructions on reverse first.

1



If you don't need a custom length jump to **Step 6**.

2



Measure the wall to determine your desired length of rail.

3



Mark your desired length on the rail with blue tape.

4



Cut your rail to the desired length with a Chop Saw or Hack Saw.

5



Remove any rough edges from your rail before moving on to step 6.

6



Insert end caps into both ends of the rail.

7

Measure to the top of the wall mount and add 1 3/8" to get desired rail height and mark position on wall.



NOTE

It is recommended that the handrail is 34in to 38in from the nose of the stair tread and wall mounts are space no more that 6ft apart.

8



Insert **(1)** 2" screw into lower mounting hole of the wall mount.

9



Repeat Step 7 & 8 for remaining wall mounts.

10



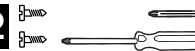
Use the Bar Clamps to position the rail onto the wall mounts.

11



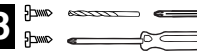
With the 1/8" drill bit, drill a pilot hole in every visible screw slot. (rail side only)

12



With your #2 Phillips Head, insert 1" screws into all pilot holes drilled in Step 10.

13



Remove Bar Clamps and repeat Step 10 & 11 to all remaining slots on the rail.

14



Install remaining 2" screws to fully attach the rail to your wall.

Connecting AHR Hand Rails

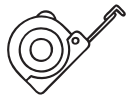
(For 8ft Sections or Longer)

! Always check local building codes, property lines and underground utilities before installation.

These instructions must be followed exactly as written and the materials used must be exactly as shown in the instructions. Any deviation from the instructions or variations in the materials installed may result in an unsuccessful installation.

NOTE: For installation instructions see other side.

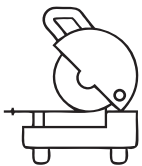
Tools Needed



Tape Measure



Blue Tape



Chop Saw or
Hack Saw

1



If you don't need a custom length jump to **Step 6** on reverse.

2



Measure the wall to determine your desired length of rail.

3



Mark your desired length on the rail with blue tape.

4



Cut your rail to the desired length with a Chop Saw or Hack Saw.

5



Remove any rough edges from your rail before moving on to step 6.

6



Insert internal connector into one the rail with the AHR Connector.

7

Insert the other end of the AHR Connector into the second rail.

8



Temporarily tape the rails together until installation is complete.

